



Vaasa Placement and excavation permit
Detailed map
Part 3




In part 2

Photo 101-107

Photo 108-116

Photo 117-124

Photo 125-126

- Excavation: 
- Fiber cabinet: 
- Fiber station: 

Vaasa Placement
and excavation
permit
Detailed map
Part 3

Photo 127-130

Photo 131-138

In part 1




Excavation: 
Fiber cabinet: 
Fiber station: 



Photo 101



Photo 102



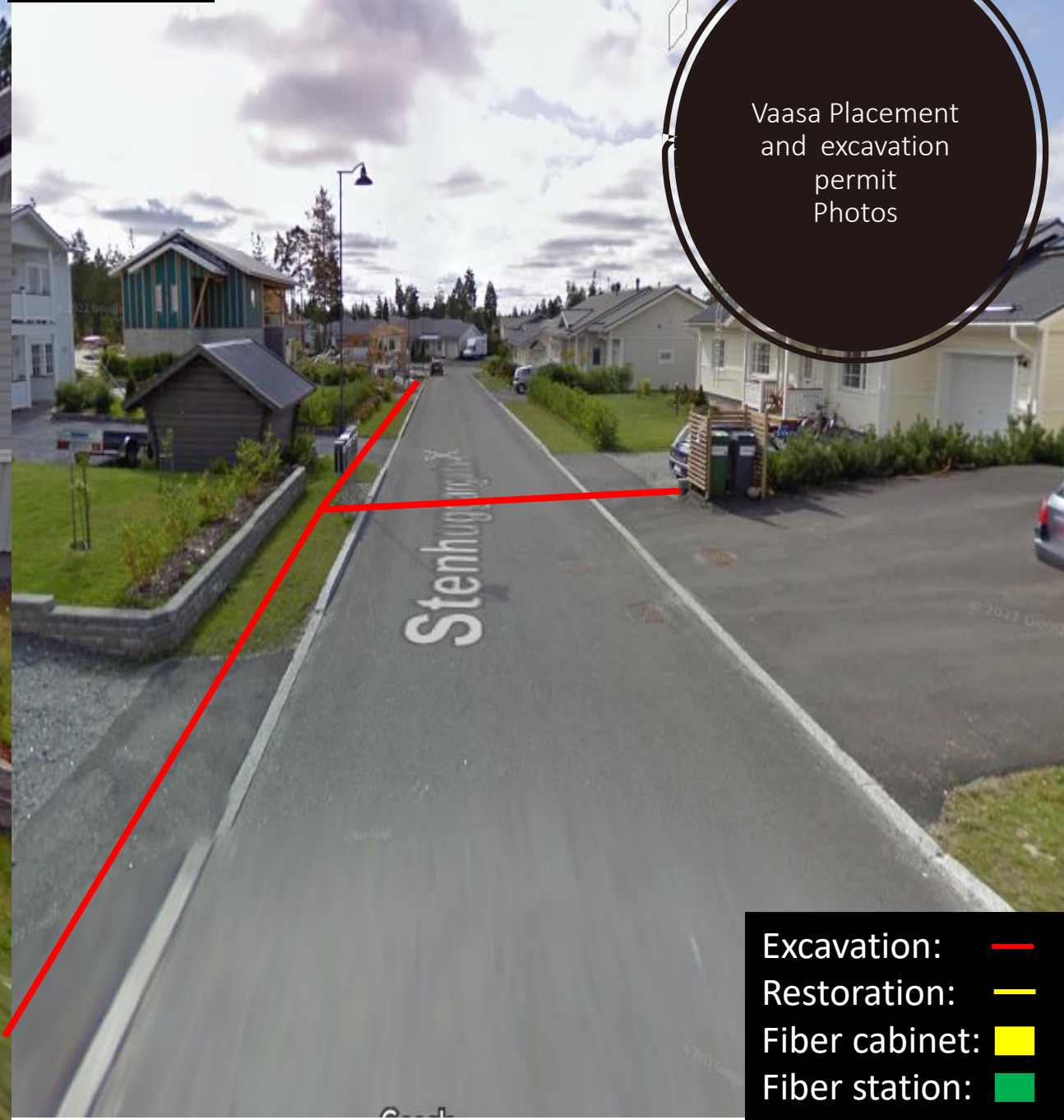
Vaasa Placement
and excavation
permit
Photos

- Excavation: —
- Restoration: —
- Fiber cabinet: ■
- Fiber station: ■

Photo 103



Photo 104



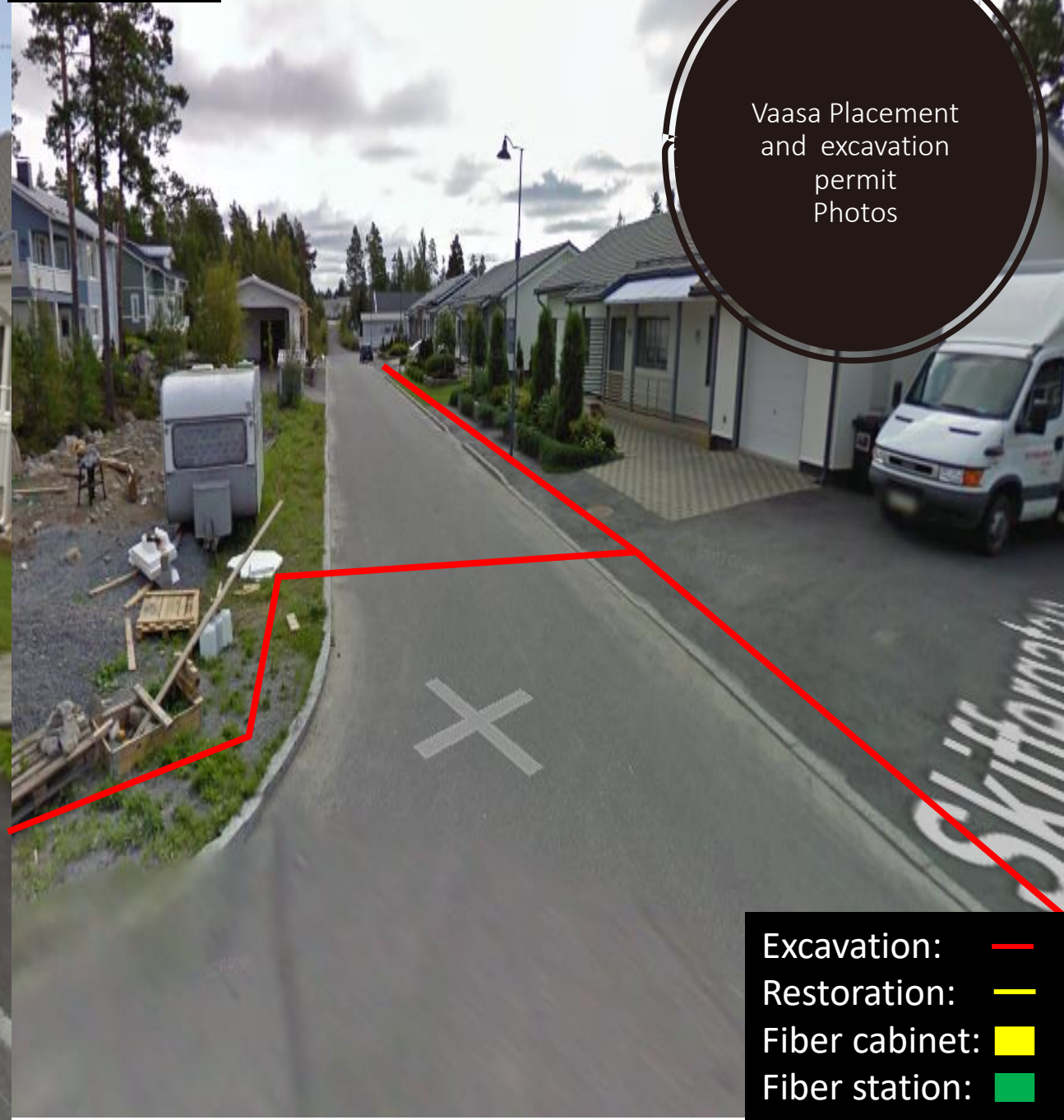
Vaasa Placement
and excavation
permit
Photos

- Excavation: —
- Restoration: —
- Fiber cabinet: ■
- Fiber station: ■

Photo 105



Photo 106



Vaasa Placement
and excavation
permit
Photos

- Excavation: —
- Restoration: —
- Fiber cabinet: ■
- Fiber station: ■

Photo 107



Photo 108



Vaasa Placement
and excavation
permit
Photos

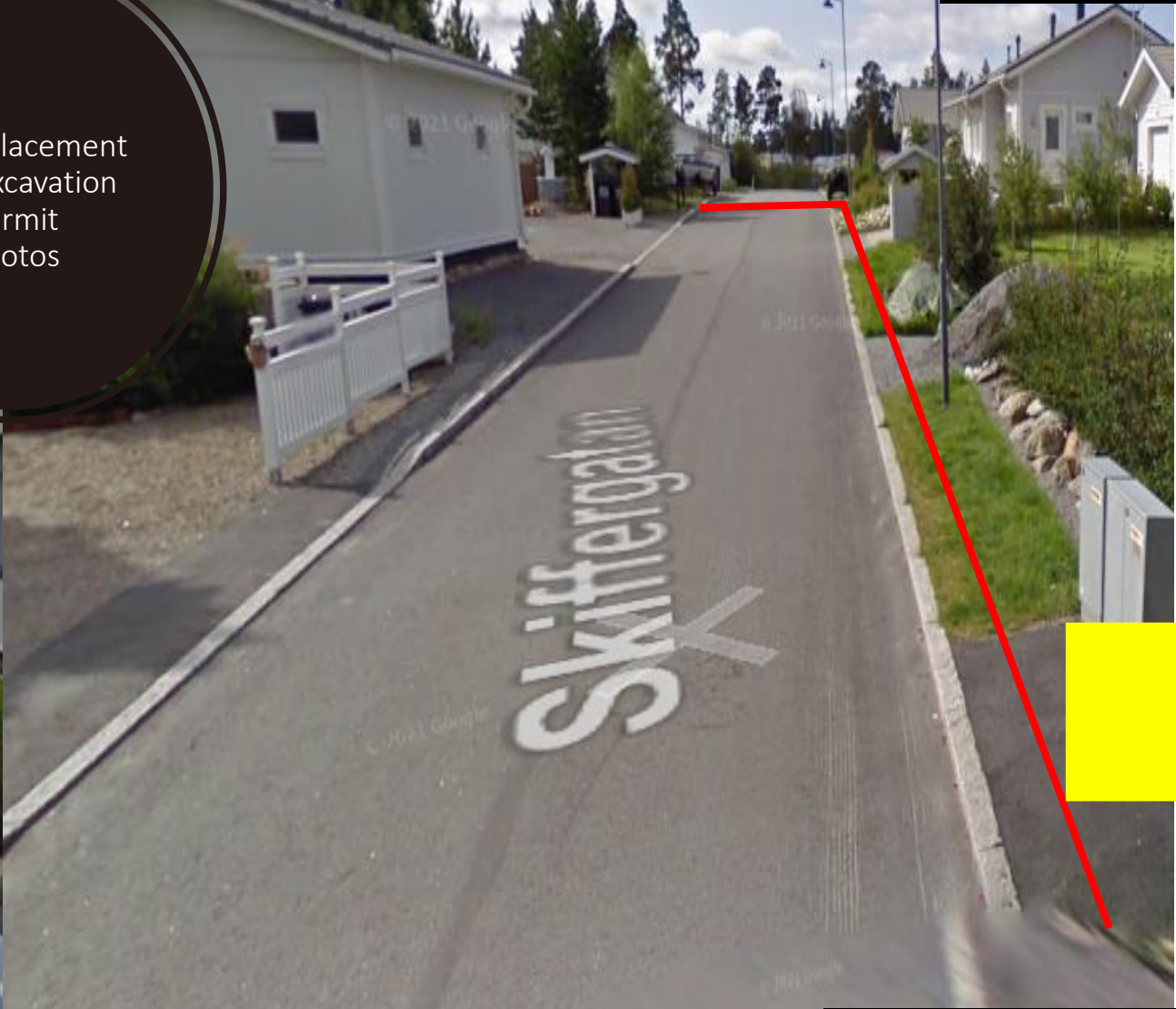
- Excavation: —
- Restoration: —
- Fiber cabinet: ■
- Fiber station: ■

Photo 109



Vaasa Placement
and excavation
permit
Photos

Photo 110



- Excavation: —
- Restoration: —
- Fiber cabinet: ■
- Fiber station: ■

Photo 111



Photo 112



Vaasa Placement
and excavation
permit
Photos

- Excavation: — (red line)
- Restoration: — (yellow line)
- Fiber cabinet: ■ (yellow square)
- Fiber station: ■ (green square)

Photo 113

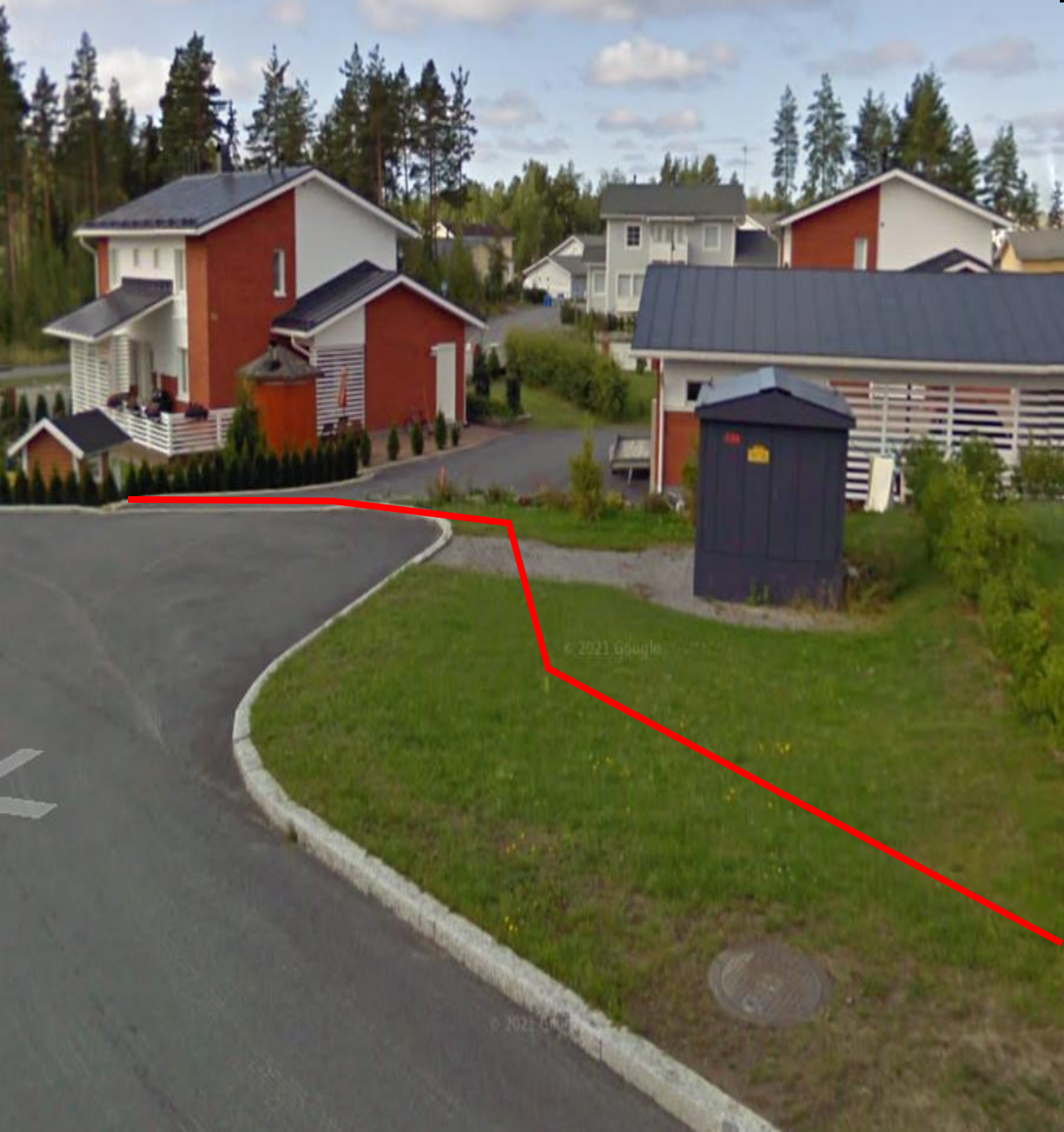


Photo 114



Vaasa Placement
and excavation
permit
Photos

- Excavation: —
- Restoration: —
- Fiber cabinet: ■
- Fiber station: ■

Photo 115

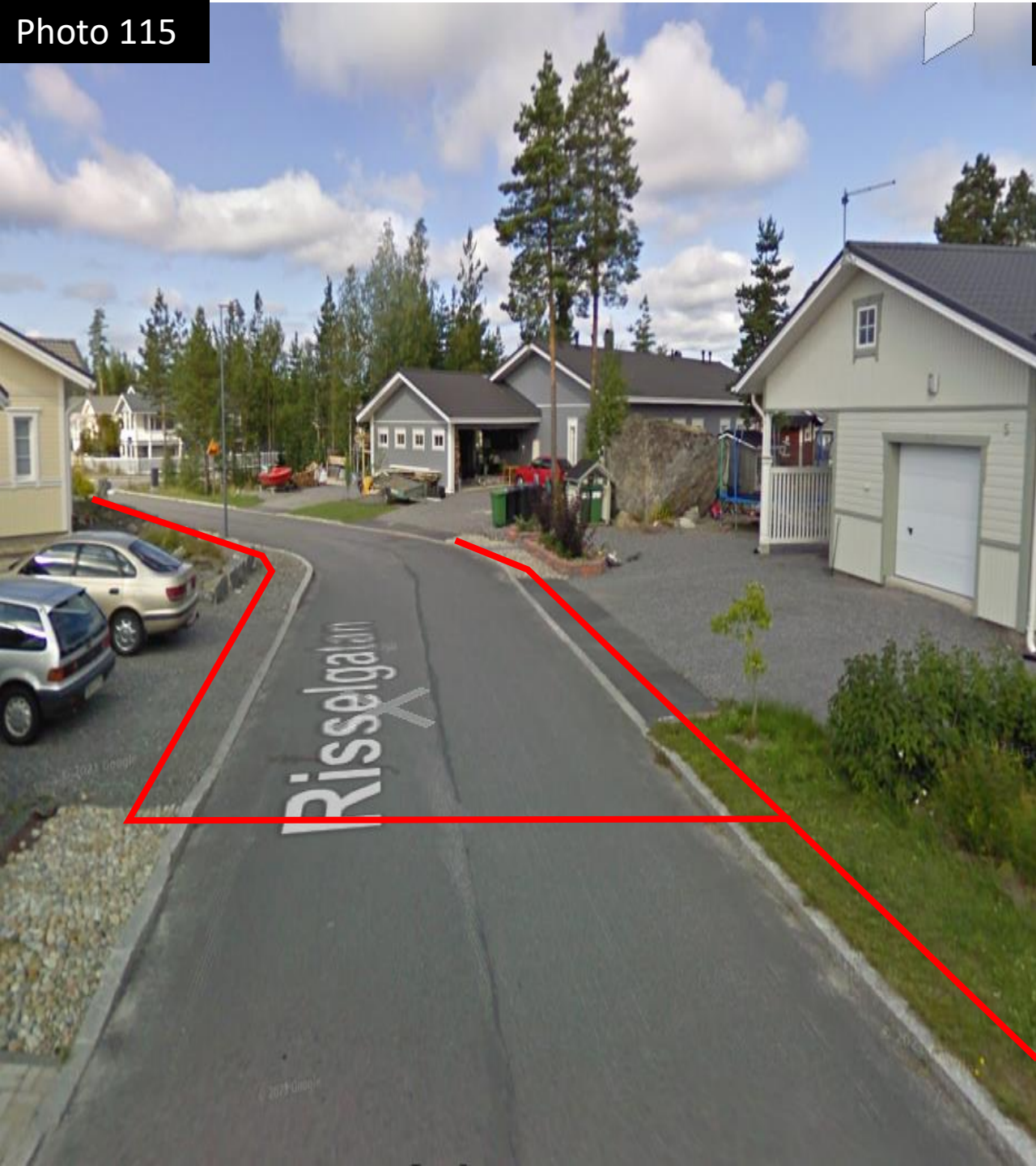
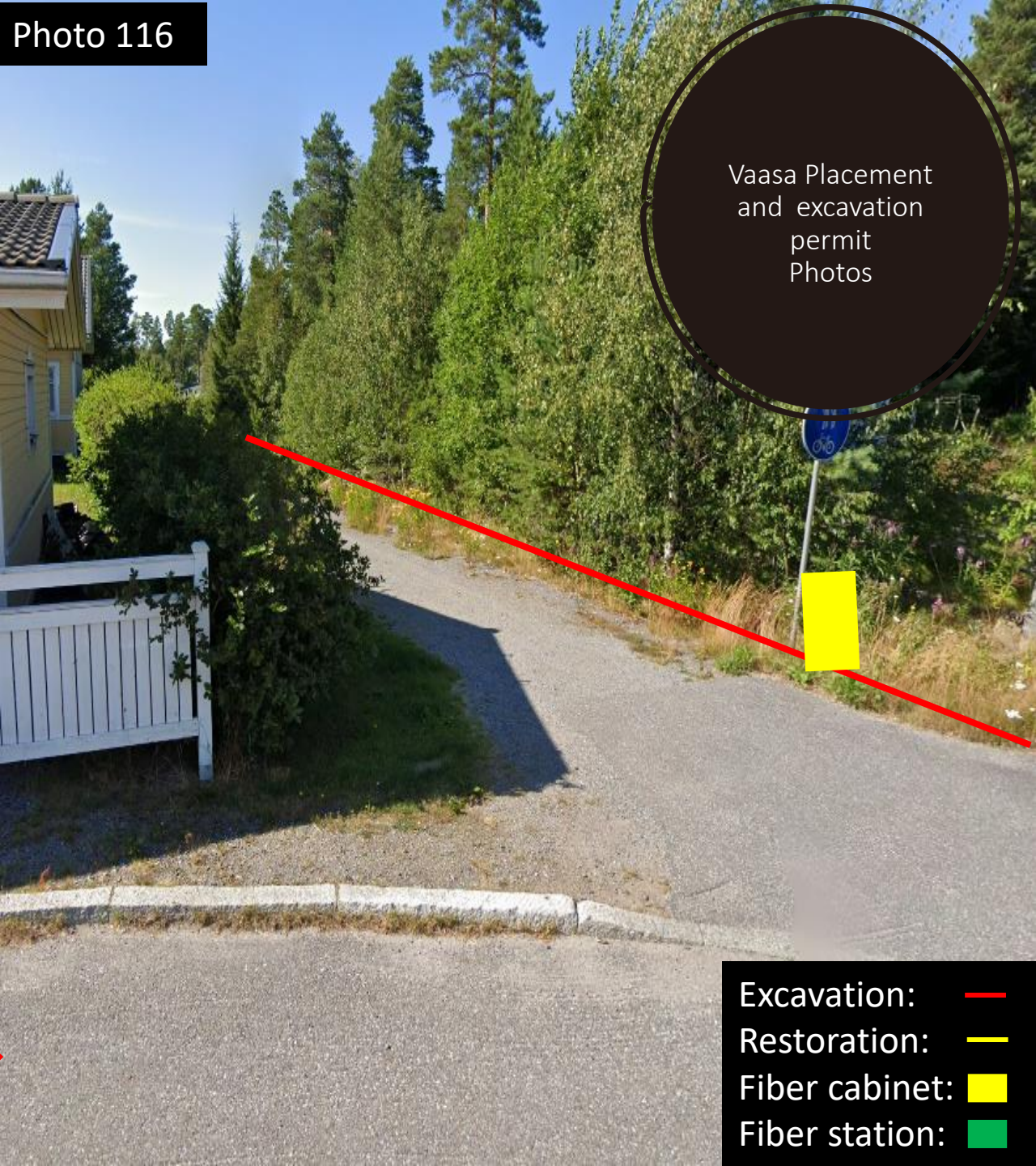


Photo 116



Vaasa Placement
and excavation
permit
Photos

- Excavation: —
- Restoration: —
- Fiber cabinet:
- Fiber station:

Photo 117



Photo 118



Vaasa Placement
and excavation
permit
Photos

- Excavation: —
- Restoration: —
- Fiber cabinet: ■
- Fiber station: ■

Photo 119



Photo 120



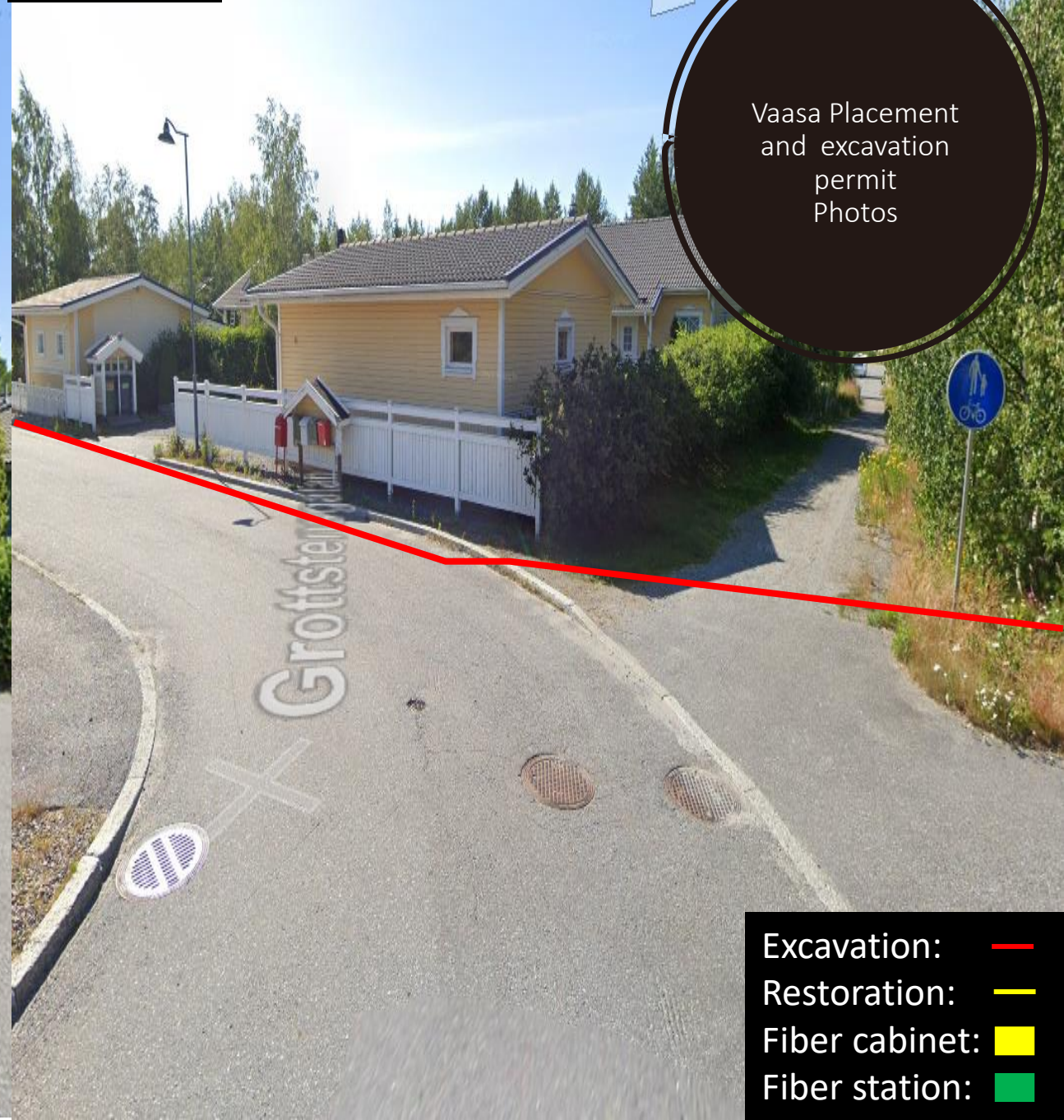
Vaasa Placement
and excavation
permit
Photos

- Excavation: —
- Restoration: —
- Fiber cabinet: ■
- Fiber station: ■

Photo 121



Photo 122



Vaasa Placement
and excavation
permit
Photos

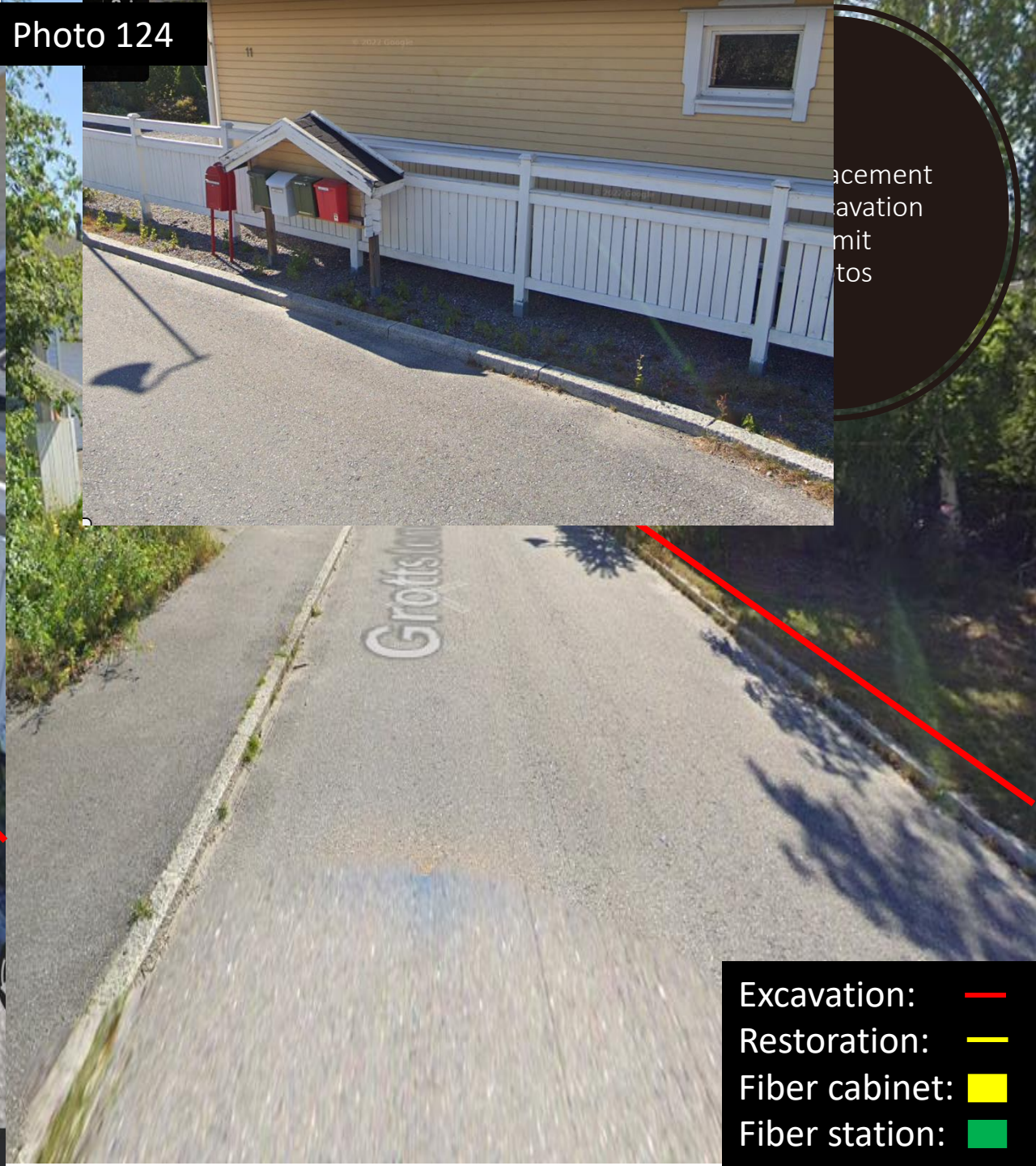
- Excavation: —
- Restoration: —
- Fiber cabinet: ■
- Fiber station: ■

ontajoupp
utettu hie

Photo 123



Photo 124



Placement
 excavation
 mit
 tos

- Excavation: —
- Restoration: —
- Fiber cabinet: ■
- Fiber station: ■

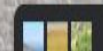


Photo 125



Photo 126



Vaasa Placement
and excavation
permit
Photos

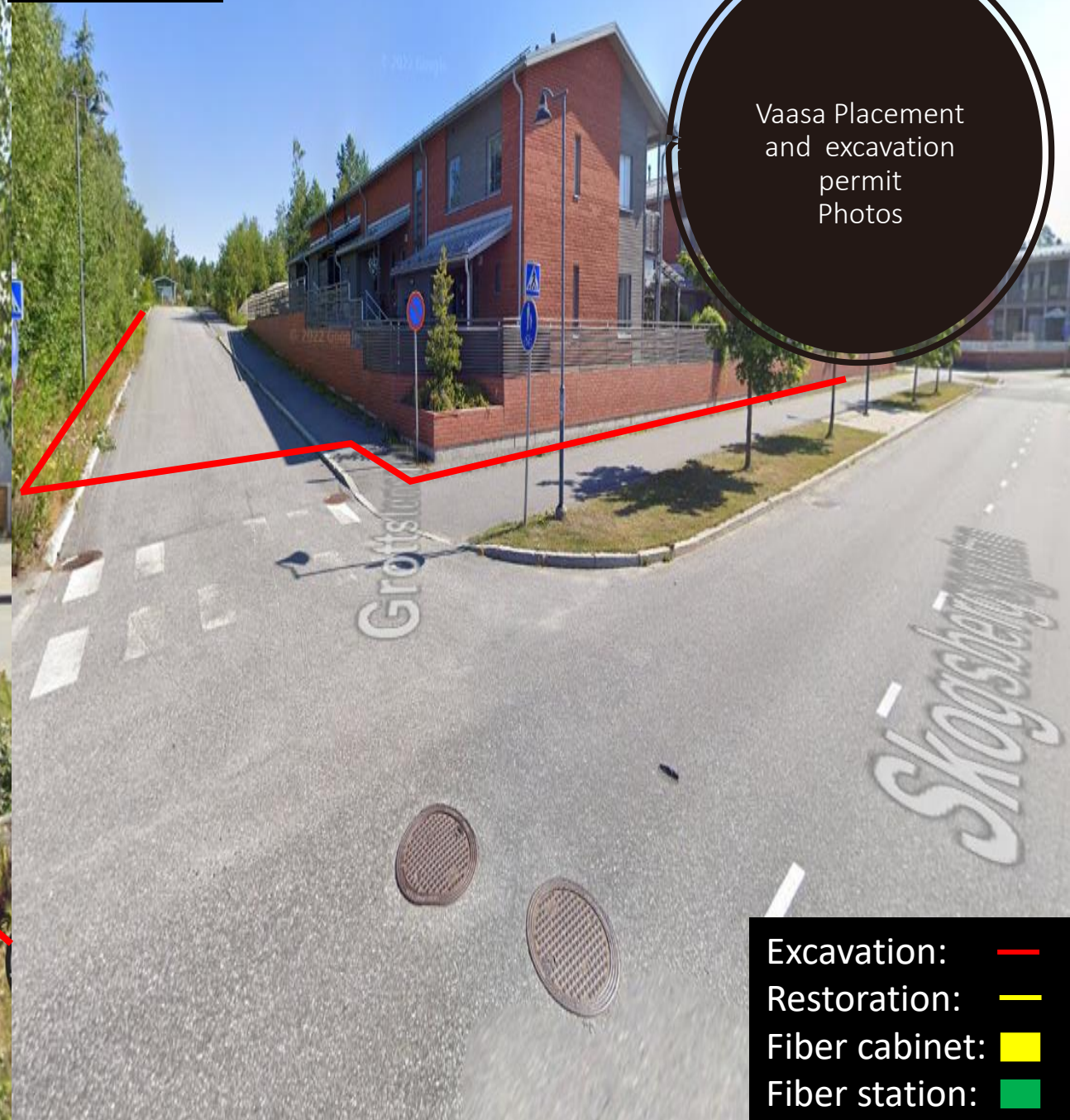
- Excavation: —
- Restoration: —
- Fiber cabinet: ■
- Fiber station: ■

Photo 127



Remove the sly and small trees to dig in soft ground next to path

Photo 128



Vaasa Placement and excavation permit Photos

- Excavation: —
- Restoration: —
- Fiber cabinet: ■
- Fiber station: ■

Photo 129



Photo 130



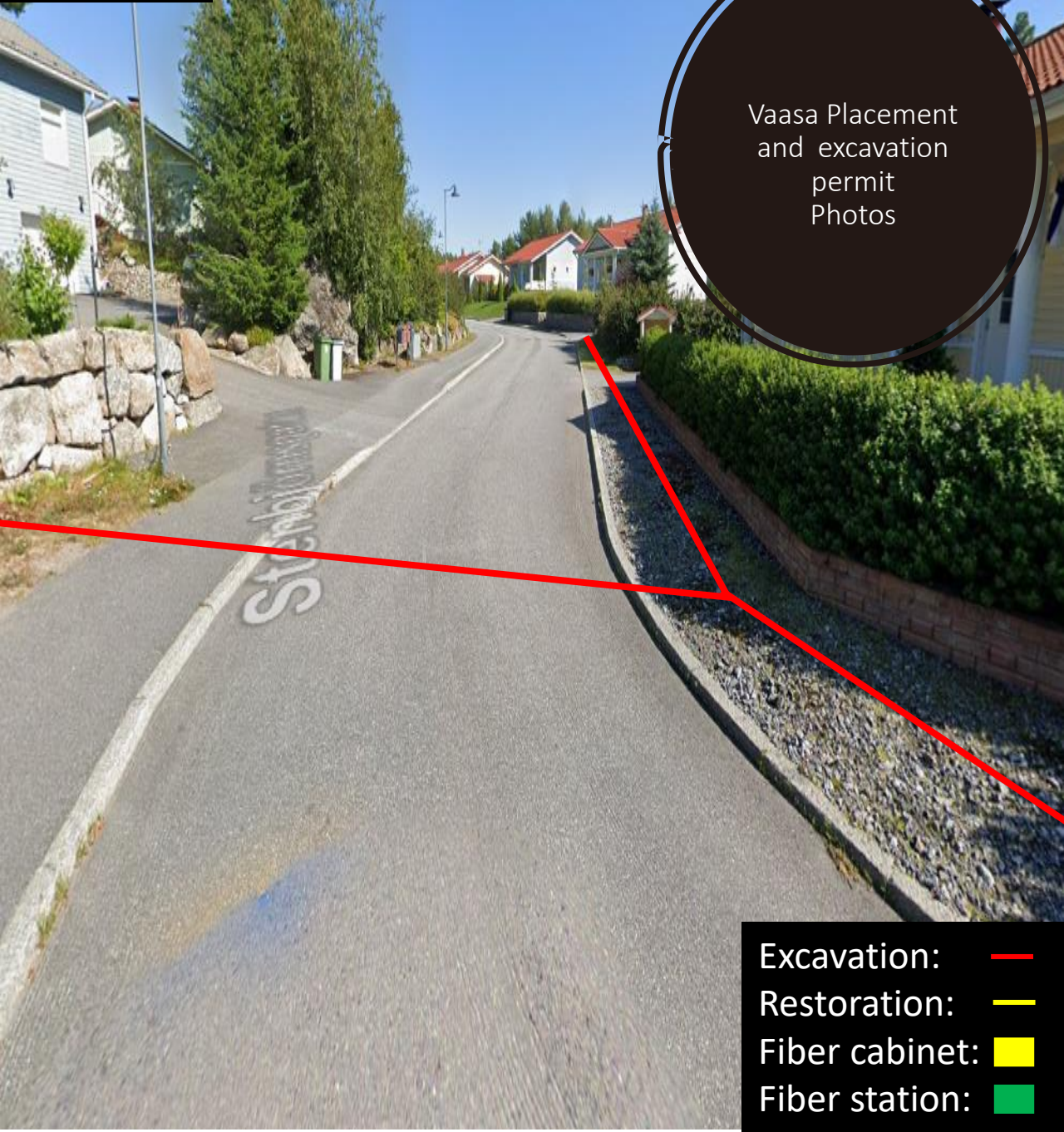
Vaasa Placement and excavation permit Photos

- Excavation: —
- Restoration: —
- Fiber cabinet:
- Fiber station:

Photo 131



Photo 132



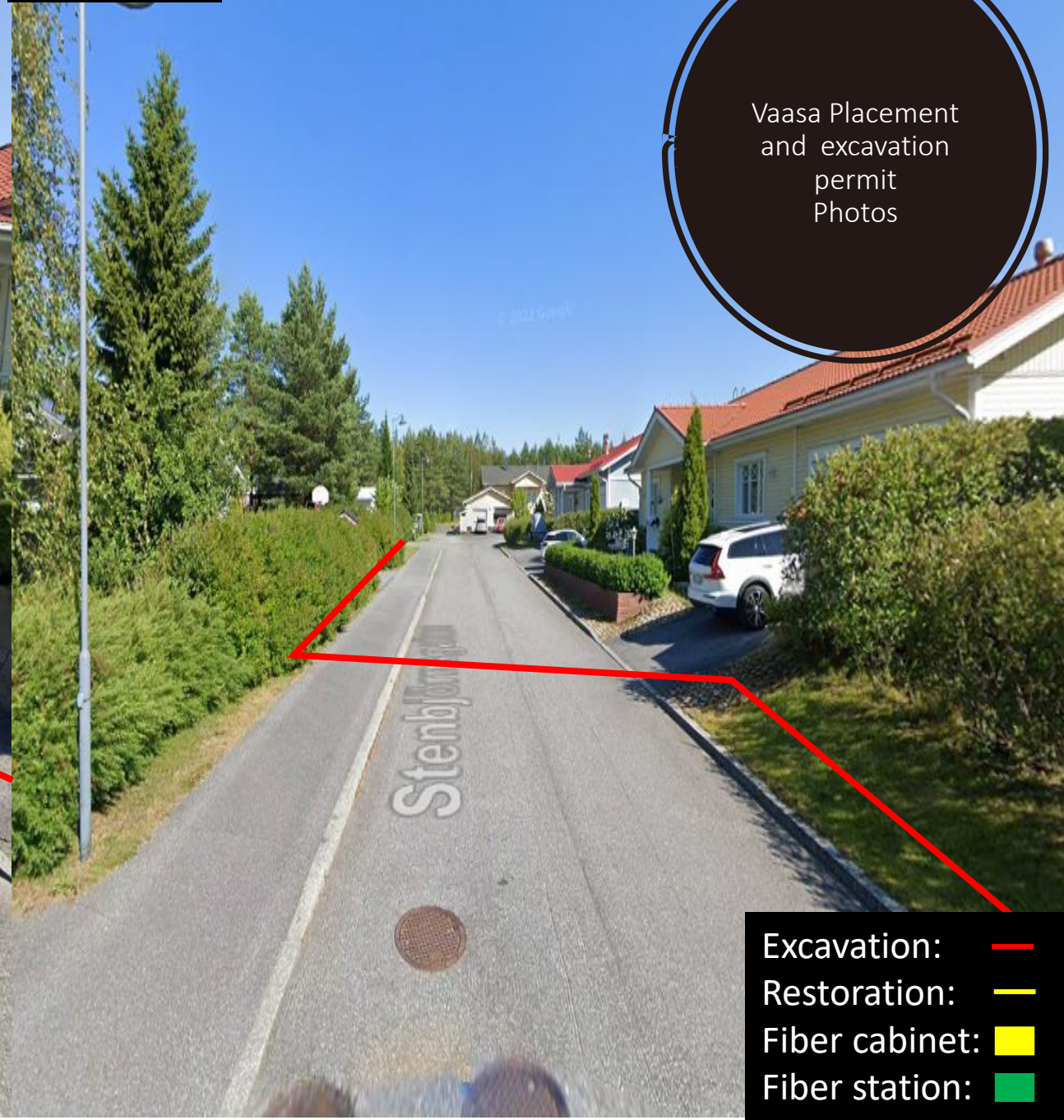
Vaasa Placement
and excavation
permit
Photos

- Excavation: —
- Restoration: —
- Fiber cabinet: ■
- Fiber station: ■

Photo 133



Photo 134



Vaasa Placement
and excavation
permit
Photos

- Excavation: —
- Restoration: —
- Fiber cabinet: ■
- Fiber station: ■

Photo 135



Photo 136



Vaasa Placement
and excavation
permit
Photos

- Excavation: —
- Restoration: —
- Fiber cabinet: ■
- Fiber station: ■

Photo 137

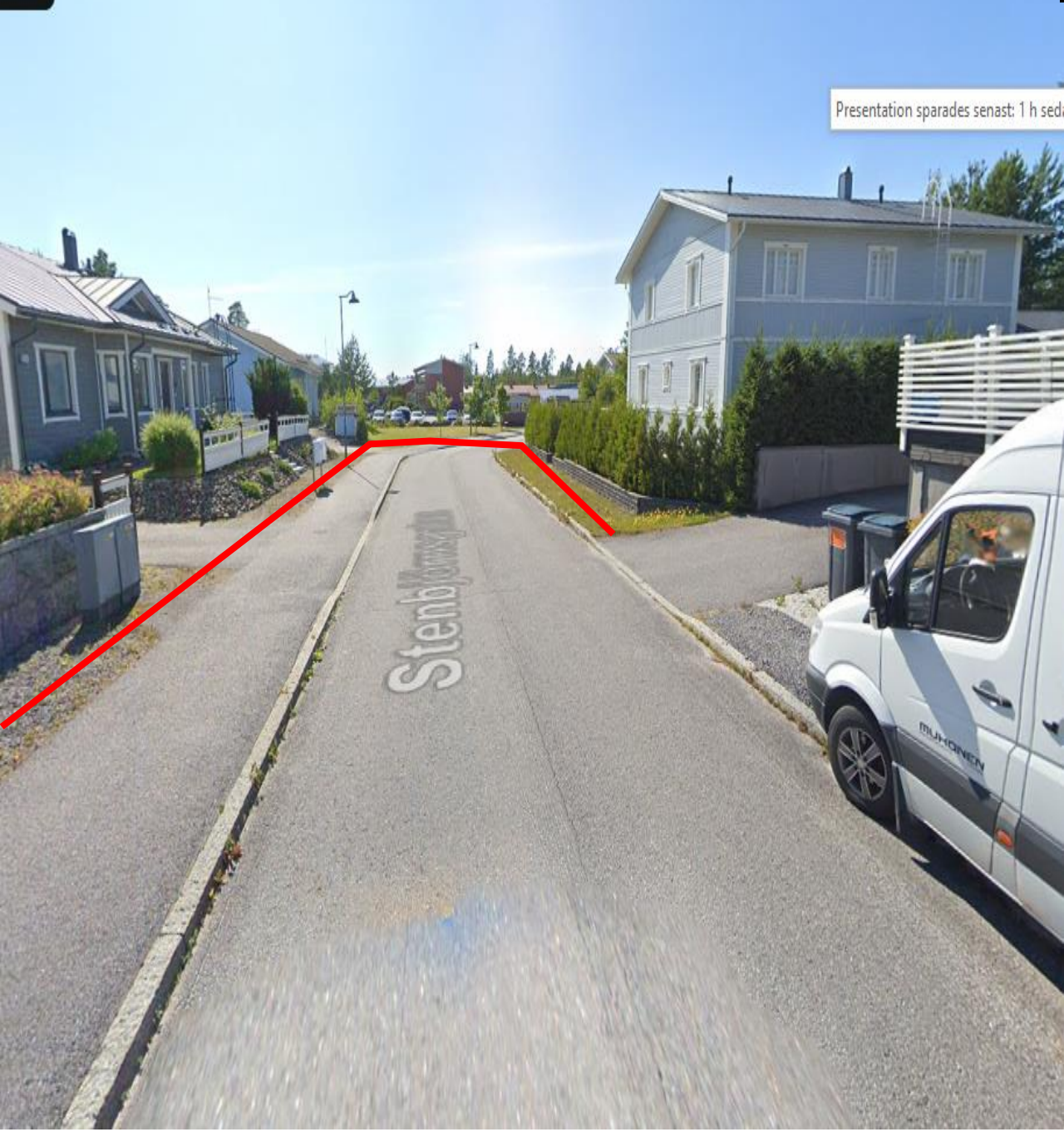


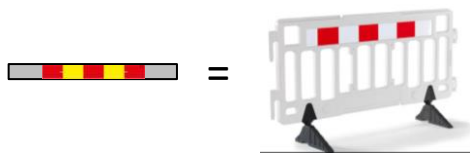
Photo 138



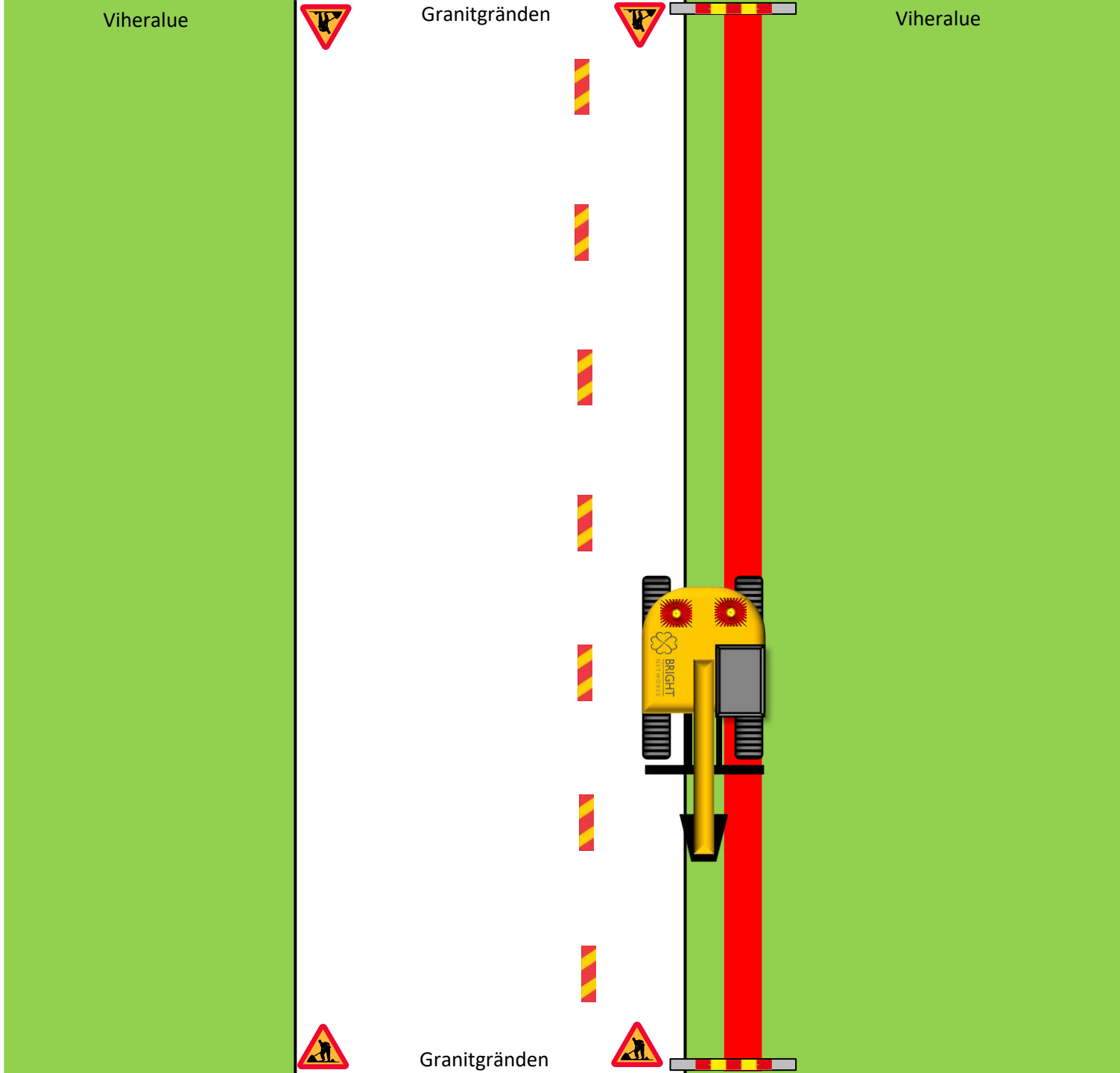
Vaasa Placement
and excavation
permit
Photos

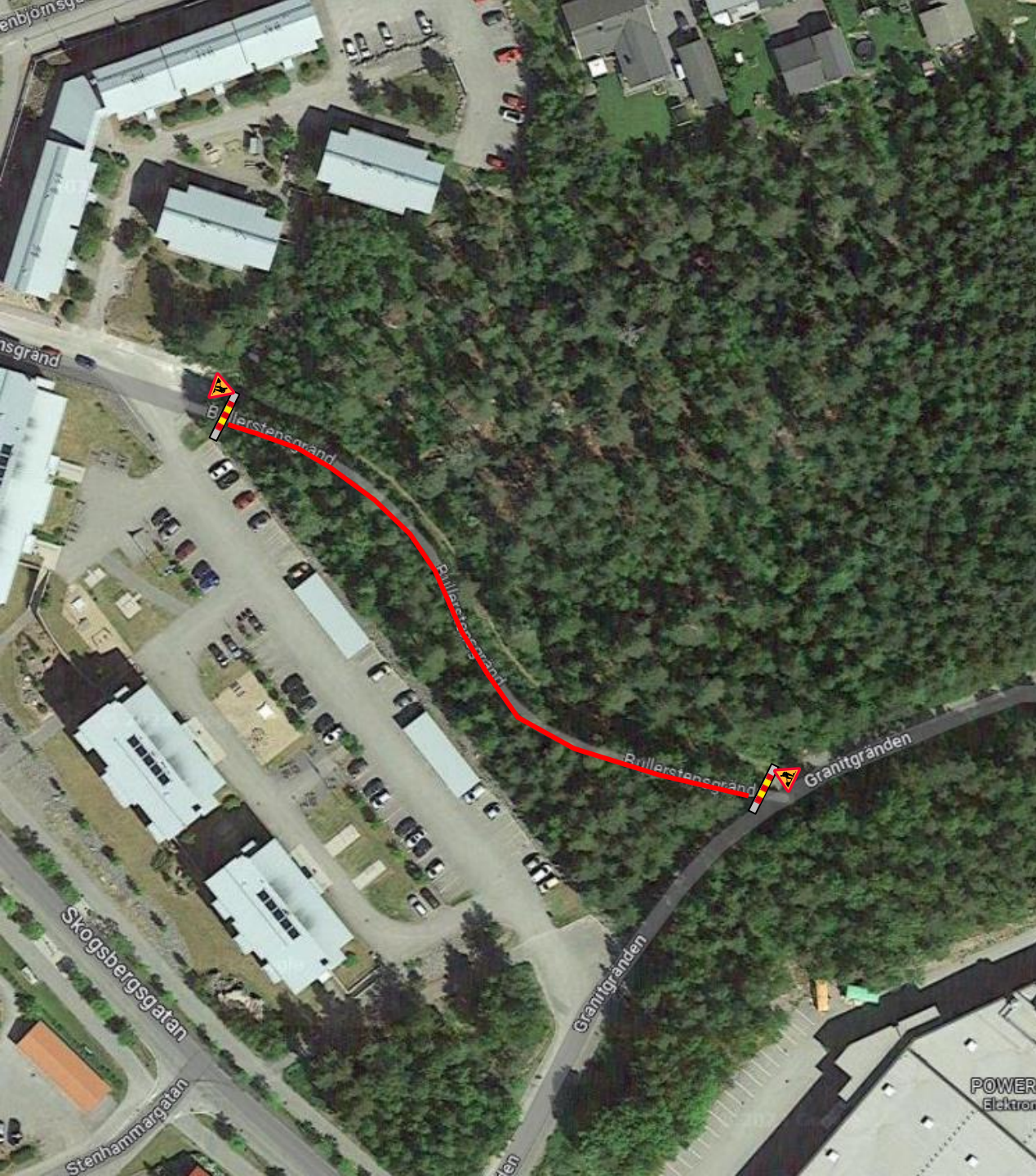
- Excavation: —
- Restoration: —
- Fiber cabinet: ■
- Fiber station: ■

Generell TA-plan
Längsgående schakt grönyta

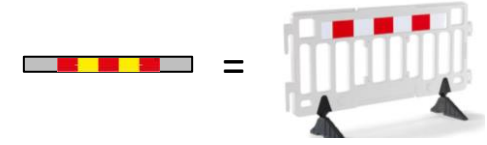


Grönyta = Viheralue

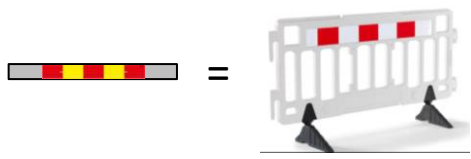




Generell TA-plan
Längsgående schakt



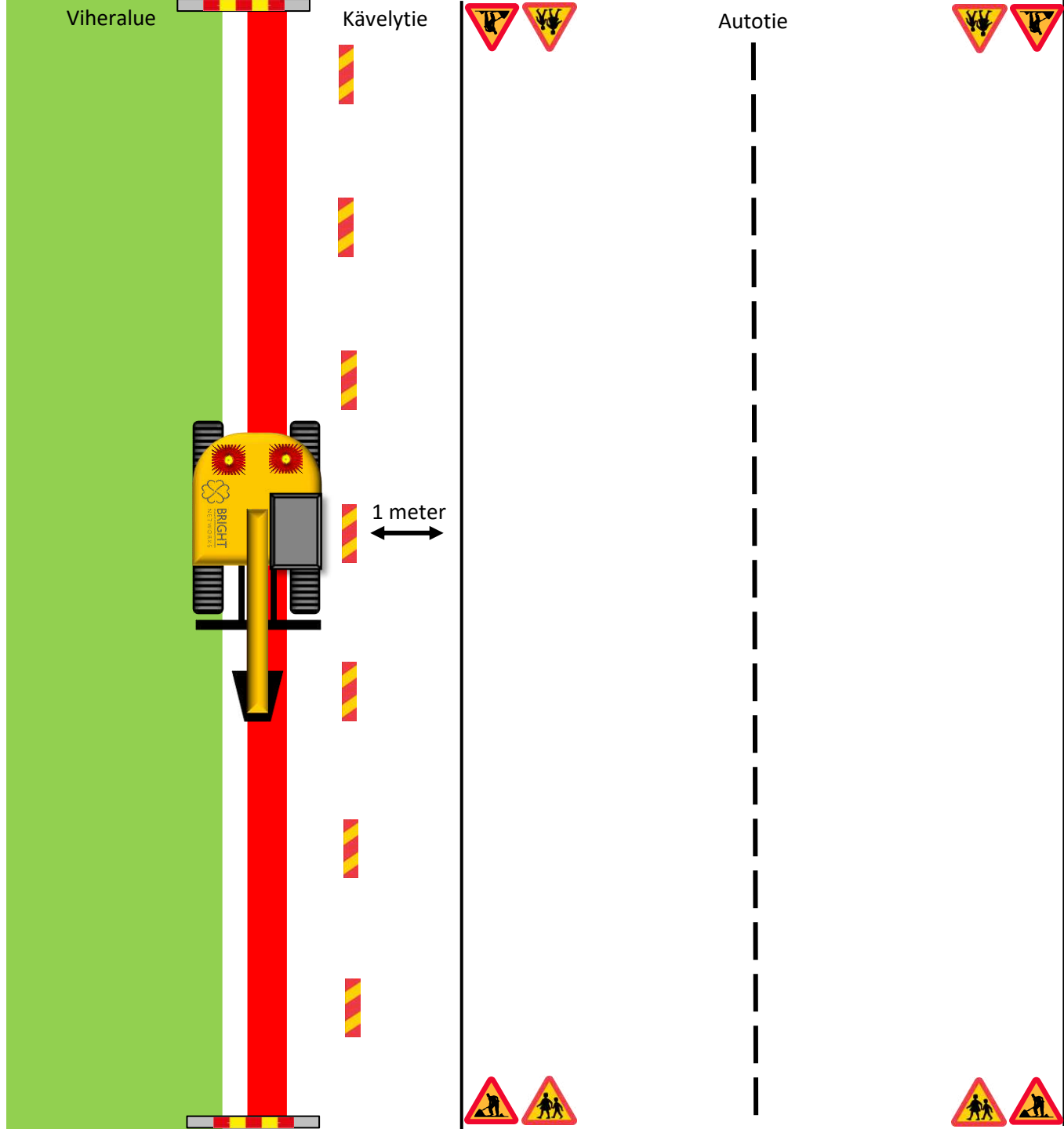
Generell TA-plan
Längsgående schakt gångbana



Grönyta = Viheralue

Gångbana = Kävelytie

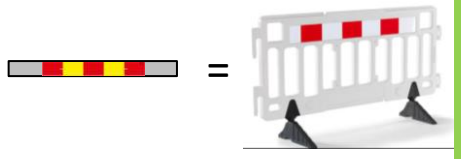
Körbana = Autotie



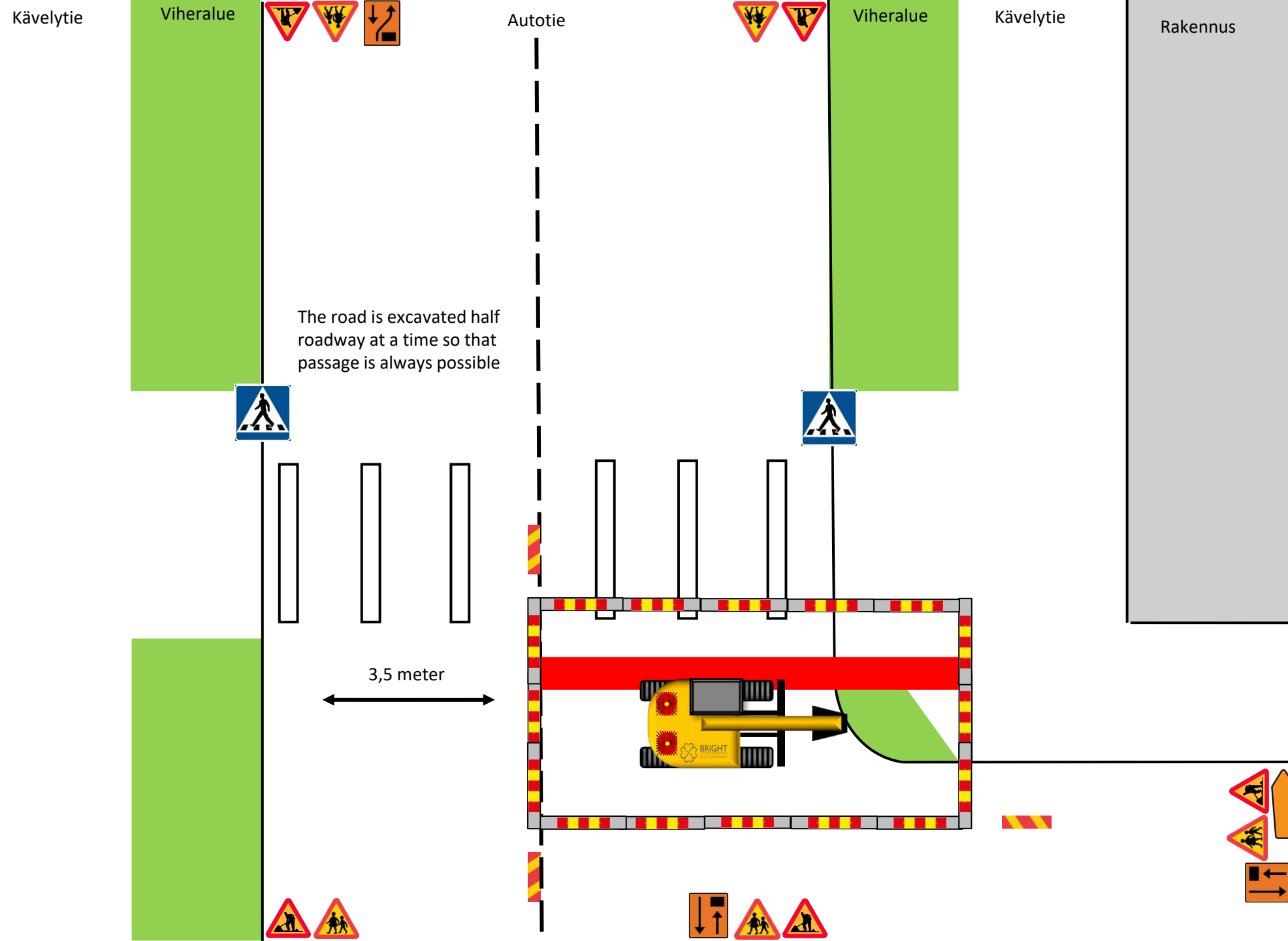
1 meter

Autotie

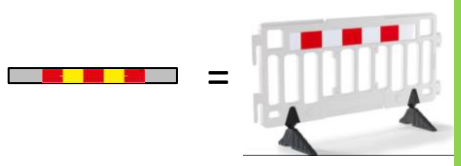
Generell TA-plan
Korsande av körbana



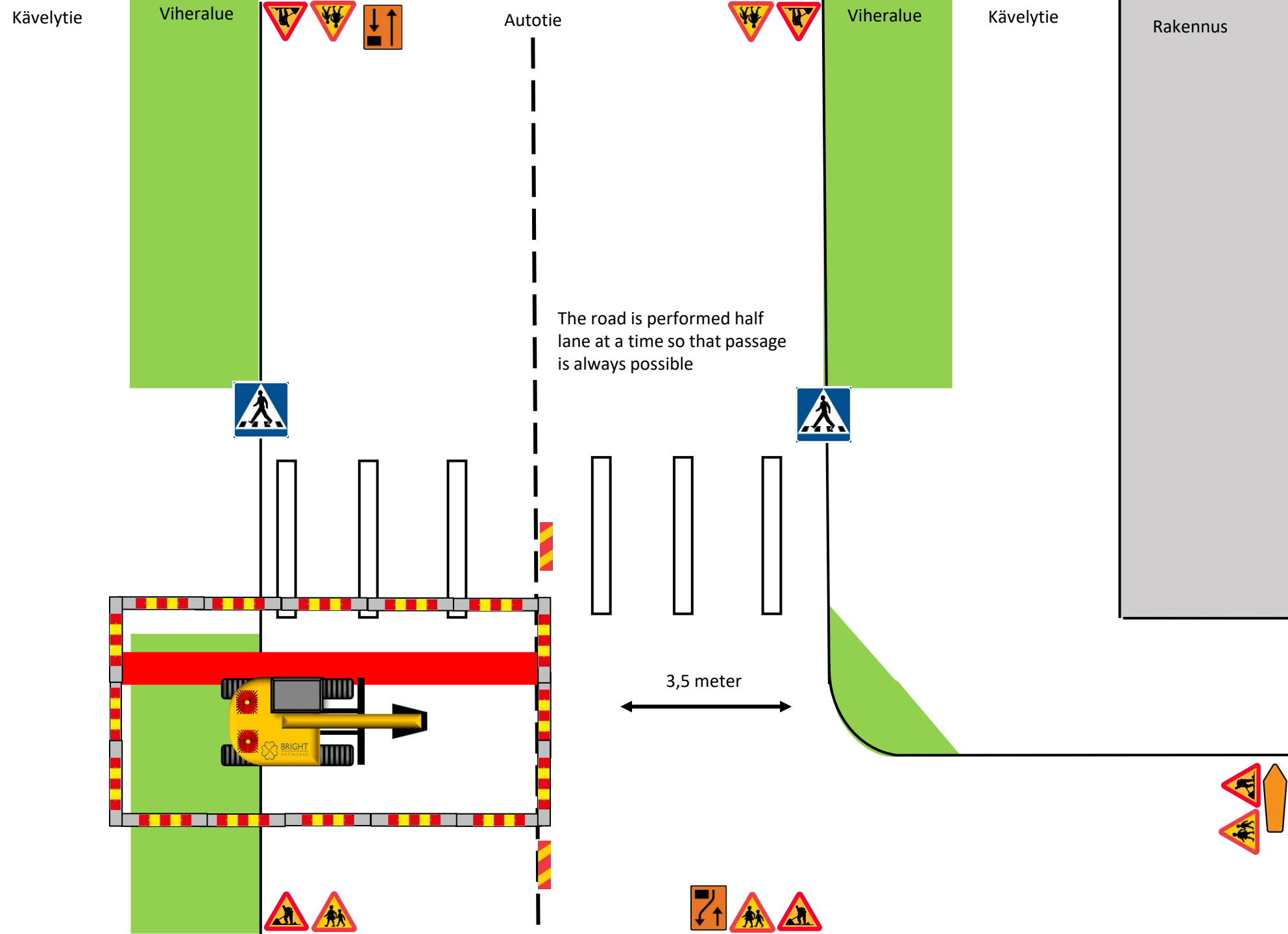
Grönyta	=	Viheralue
Gångbana	=	Kävelytie
Körbana	=	Autotie



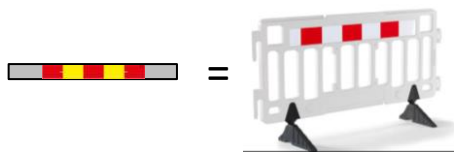
Generell TA-plan
Korsande av körbana



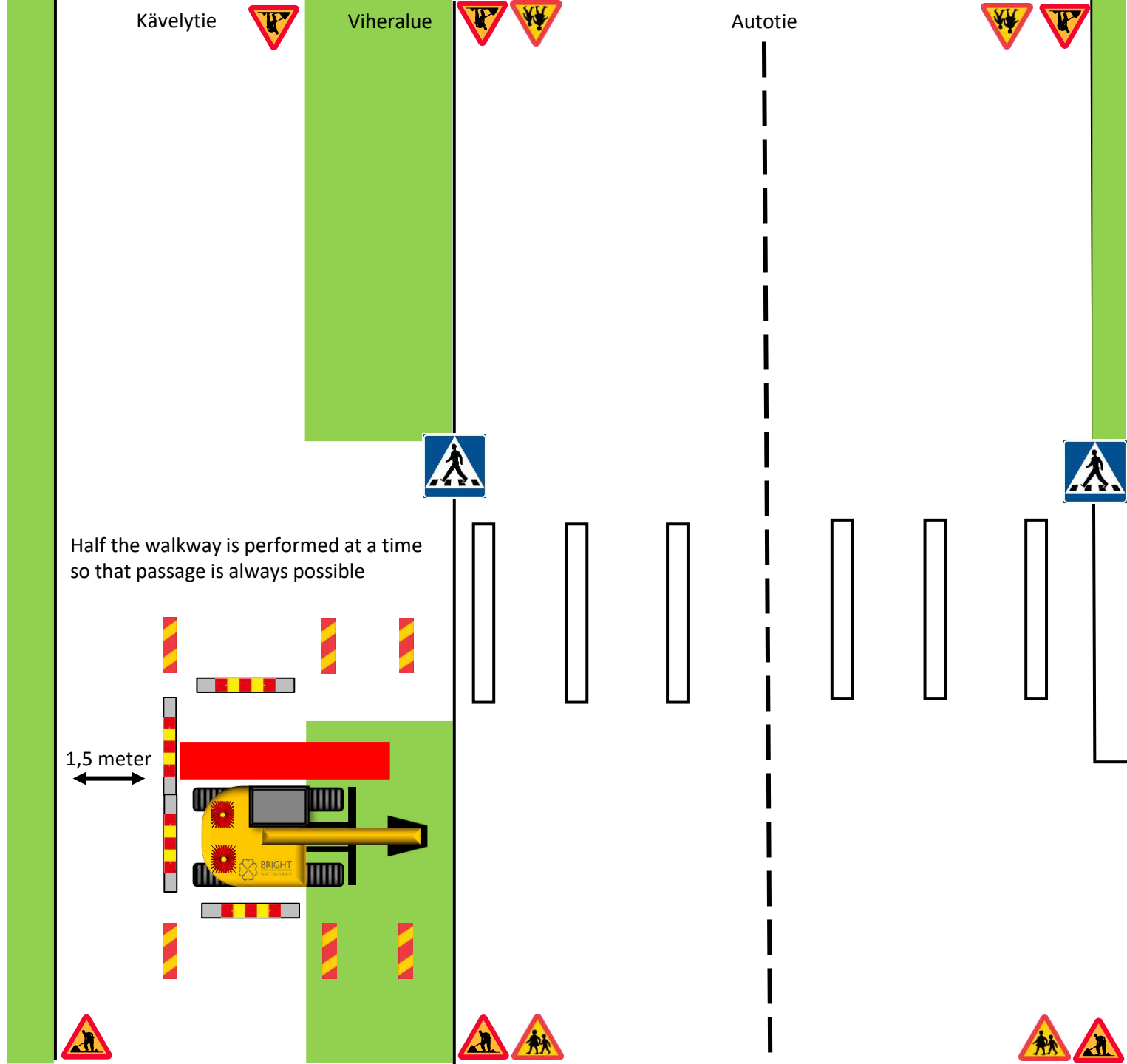
Grönyta	=	Viheralue
Gångbana	=	Kävelytie
Körbana	=	Autotie



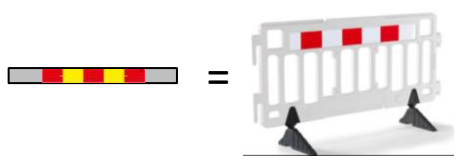
Generell TA-plan
Korsande av gångbana



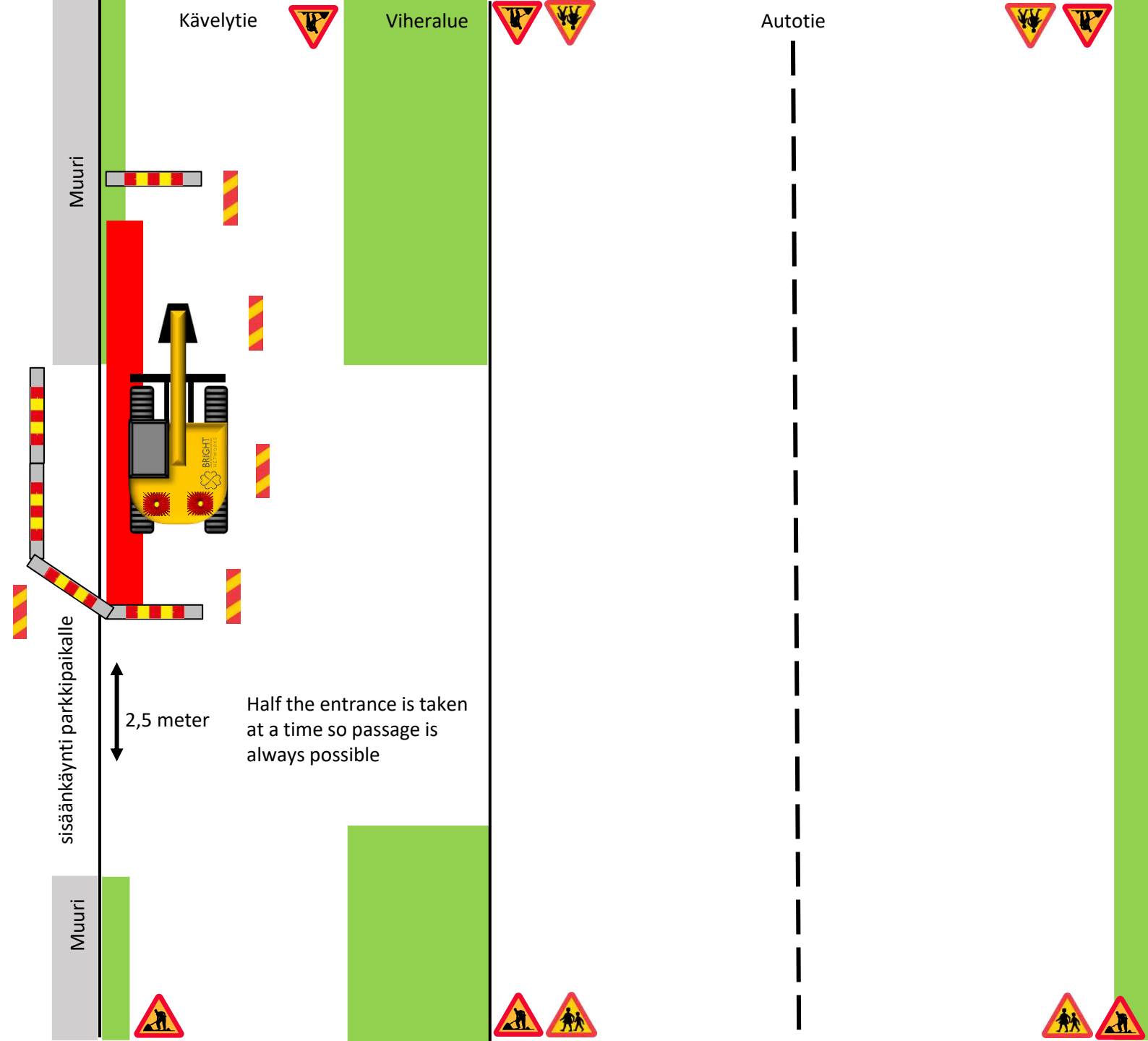
Grönyta	=	Viheralue
Gångbana	=	Kävelytie
Körbana	=	Autotie



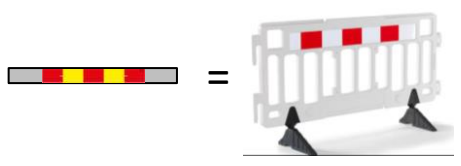
Generell TA-plan
Korsande av infart



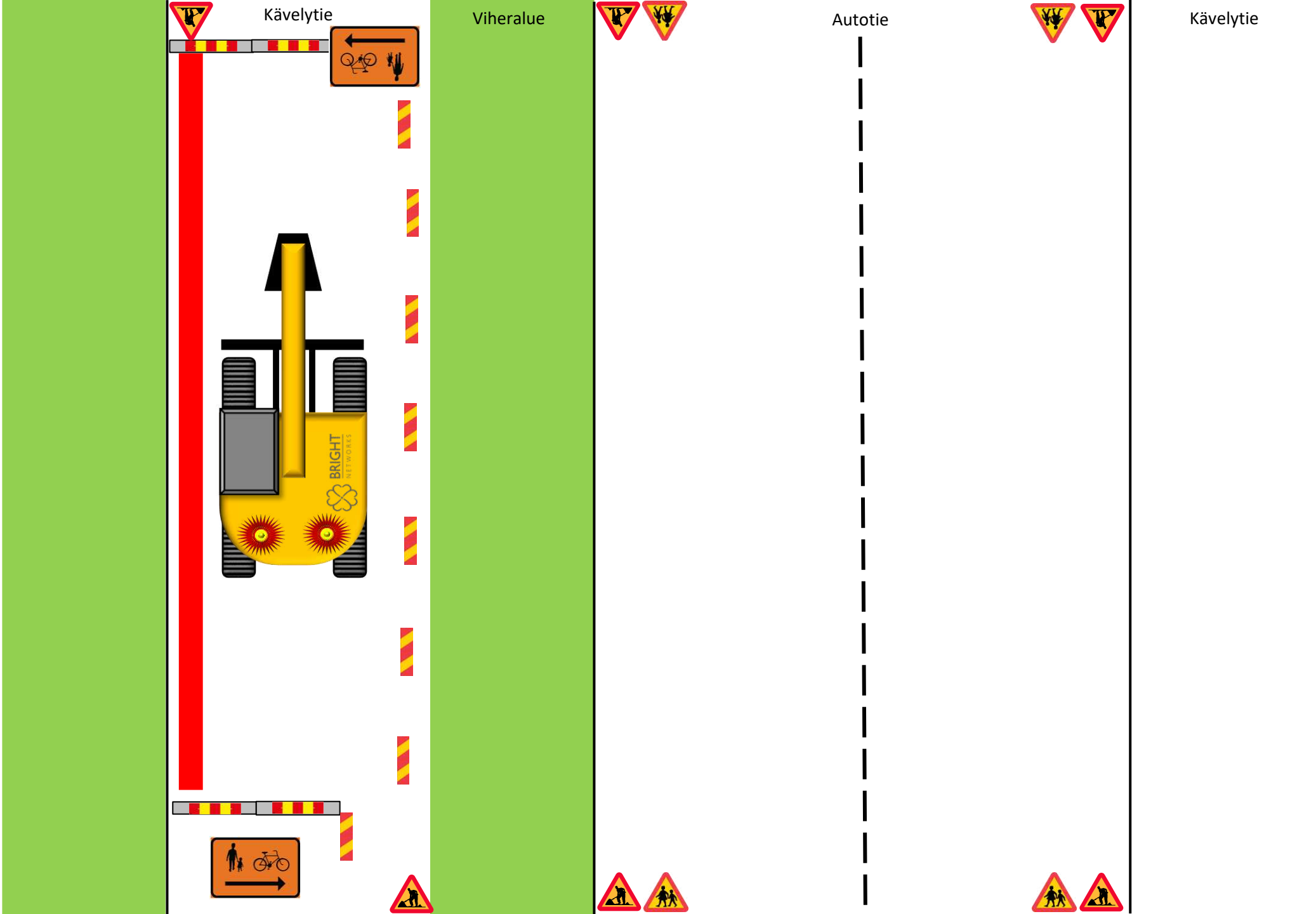
- | | | |
|----------|---|-----------------------------|
| Grönyta | = | Viheralue |
| Gångbana | = | Kävelytie |
| Körbana | = | Autotie |
| Mur | = | Muuri |
| Infart | = | sisäänkäynti parkkipaikalle |



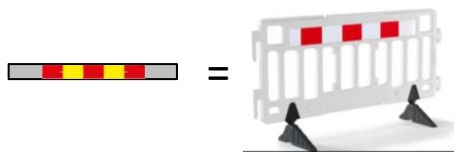
Generell TA-plan
Längsgående gångbana asfalt



Grönyta	=	Viheralue
Gångbana	=	Kävelytie
Körbana	=	Autotie



Generell TA-plan
Längsgående gångbana asfalt

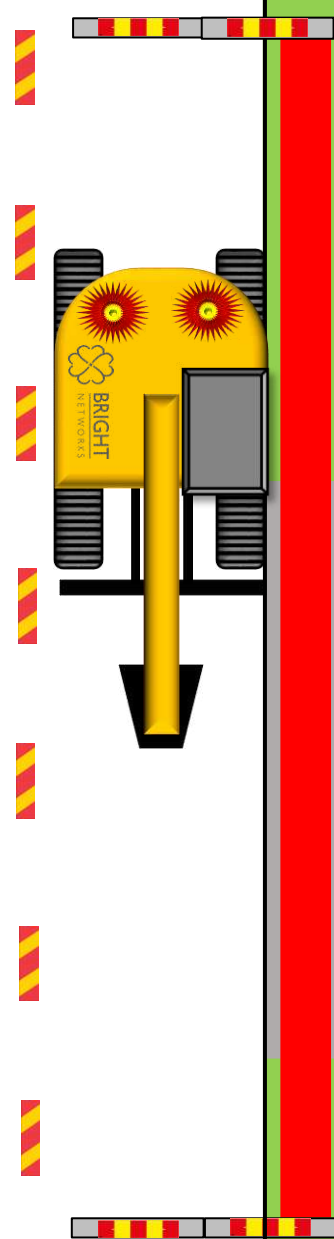
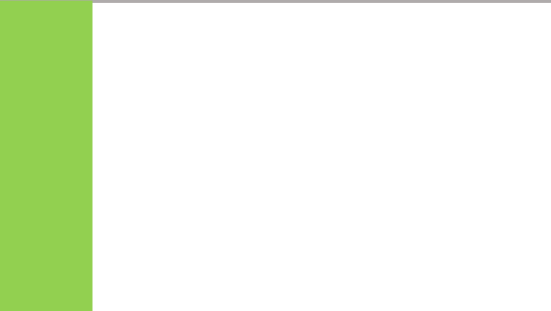
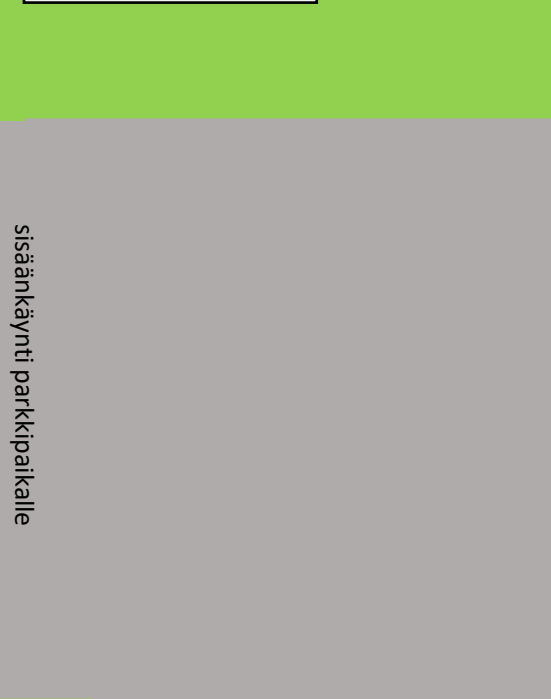
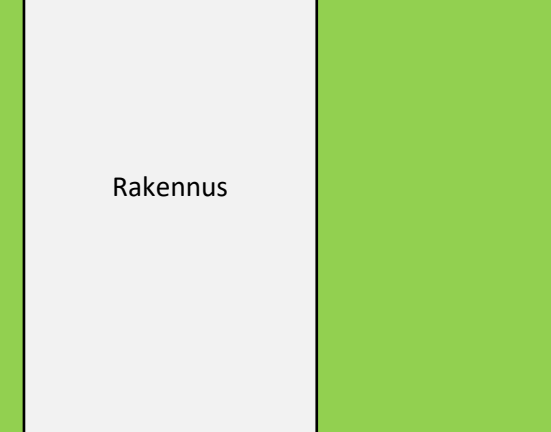


Grönyta	=	Viheralue
Gångbana	=	Kävelytie
Körbana	=	Autotie
Infart	=	sisäänkäynti parkkipaikalle
Byggnad	=	Rakennus

Viheralue

Kävelytie

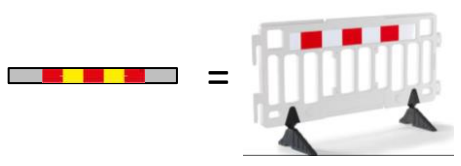
Autotie



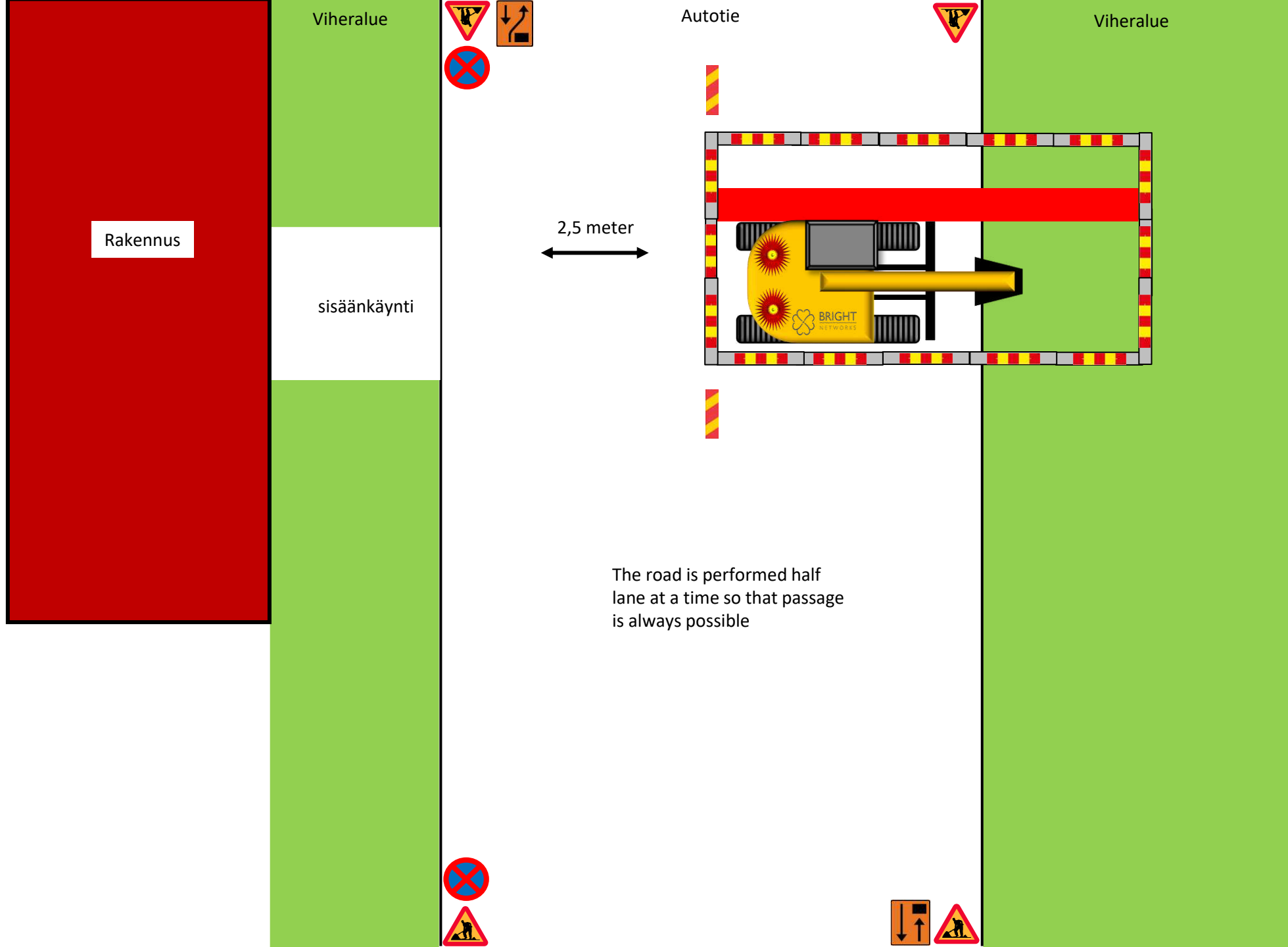
Rakennus

sisäänkäynti parkkipaikalle

Generell TA-plan
Korsande schakt villagata

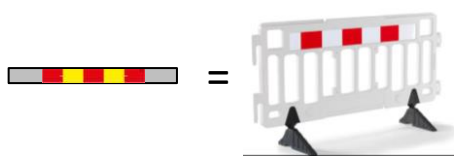


Grönyta	=	Viheralue
Körbana	=	Autotie
Entré	=	sisäänkäynti
Byggnad	=	Rakennus

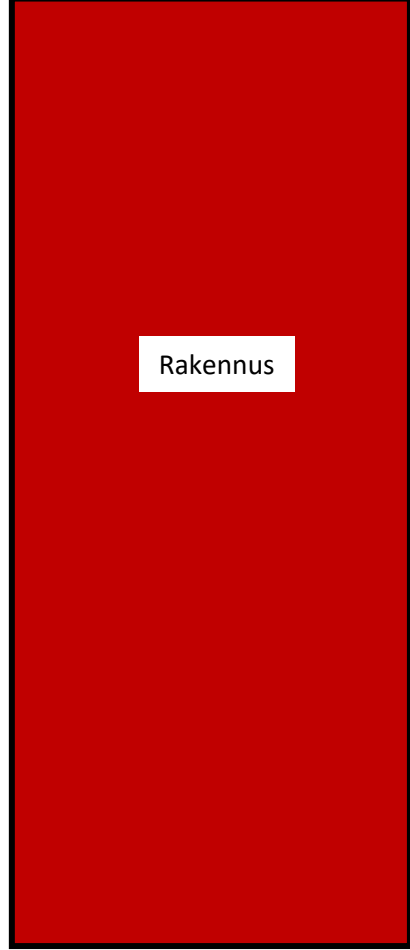


The road is performed half lane at a time so that passage is always possible

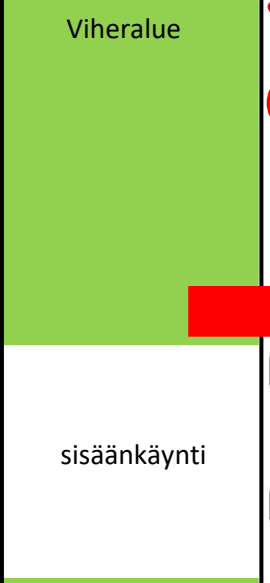
Generell TA-plan
Korsande schakt villagata



Grönyta	=	Viheralue
Körbana	=	Autotie
Entré	=	sisäänkäynti
Byggnad	=	Rakennus



Rakennus

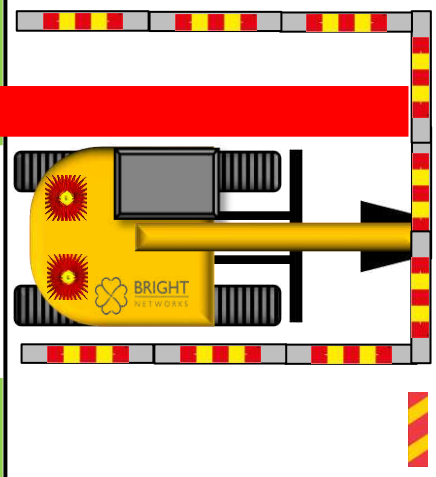


Viheralue

sisäänkäynti



Autotie

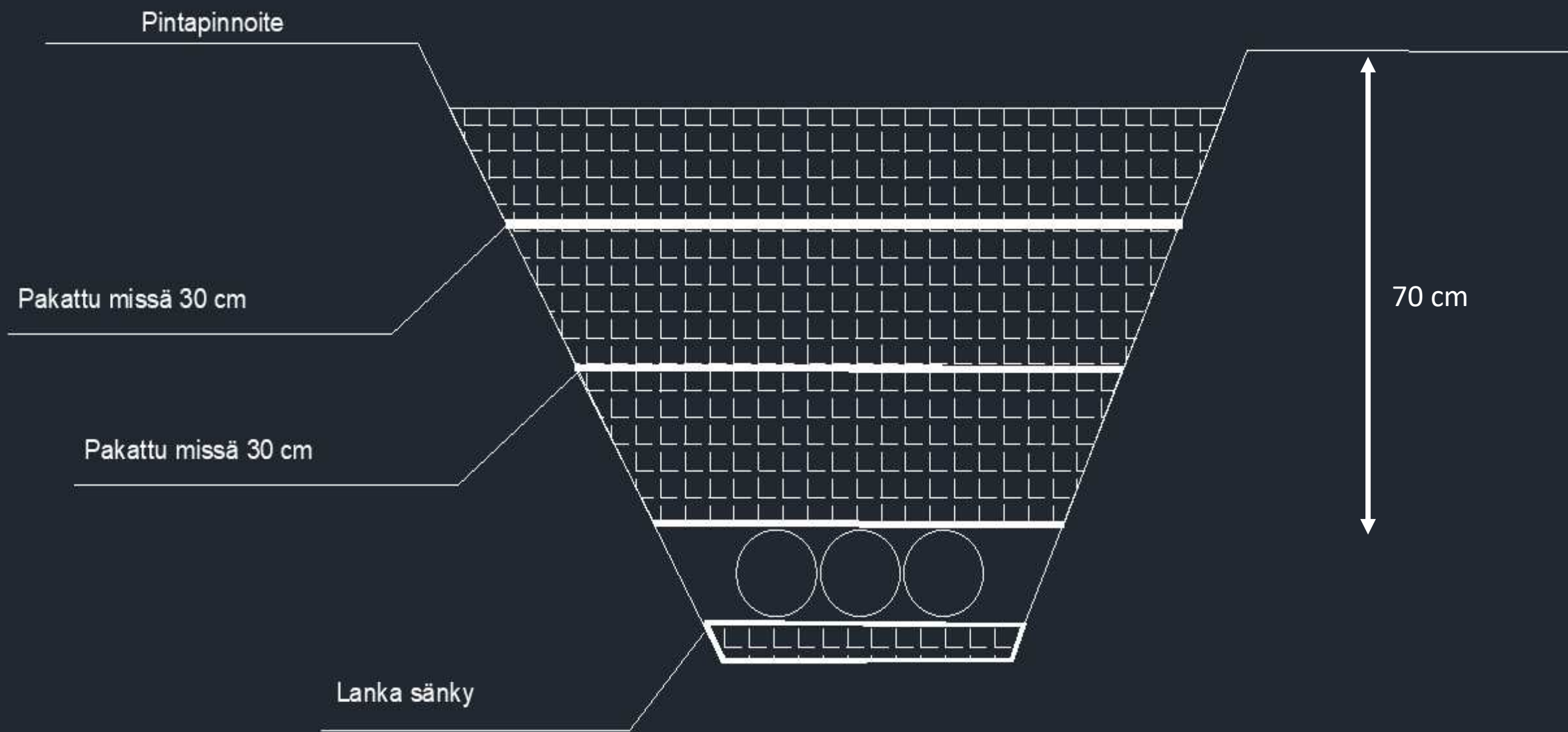


2,5 meter

The road is performed half lane at a time so that passage is always possible



Viheralue



FULLMAKT

Härmed ger GlobalConnect AB (org.nr. 556597-6122) samt IP-Only Produktion AB (org.nr 556 717-9444), nedan gemensamt GlobalConnect, fullmakt till:

Marcus Hermansson, 891128-0017, på Bright Networks

att såsom GlobalConnects särskilda representant, ansöka om, ingå samt underteckna följande handlingar (*enligt nedan ikryssade alternativ*):

I förhållande till Trafikverket:

- Ansöka om tillstånd att utföra ledningsarbete enligt 44§ väglagen (1971:948)
- Ansöka om Trafikanordningsplaner (TA)
- Ansöka om ledningskorsning och långsgående ledningar som berör Trafikverkets järnvägsanläggningar och fastigheter

I förhållande till kommun:

- Ansöka om tillstånd för grävning och schaktning (dock ej markavtal för allmän platsmark)
- Ansöka om Trafikanordningsplaner (TA)

I förhållande till kommun:

- Ansöka om bygglov för GlobalConnects standard access siter
- Teckna arrendeavtal i enlighet med GlobalConnects standardvillkor

I förhållande till fastighetsägare/vägförening/samfällighet och andra som berörs av nyttjande och rådighet över enskild fastighet:

- Teckna markupplåtelseavtal i enlighet med GlobalConnects standardvillkor

Denna fullmakt gäller till och med 2023-12-31

GlobalConnect AB/IP-Only Produktion AB

Uppsala den 2023-04-25

Fredrik Rindesparr

Verifikat

Transaktion 09222115557491506780

Dokument

Fullmakt för TRV, Kommun, FÅ Marcus H

Huvuddokument

1 sida

Startades 2023-04-25 10:35:20 CEST (+0200) av Fredrik Rindesparr (FR)

Färdigställt 2023-04-25 10:35:20 CEST (+0200)

Signerande parter

Fredrik Rindesparr (FR)

GlobalConnect

fredrik.rindesparr@globalconnect.se

+46705594254

Signerade 2023-04-25 10:35:20 CEST (+0200)

Detta verifikat är utfärdat av Scrive. Information i kursiv stil är säkert verifierad av Scrive. Se de dolda bilagorna för mer information/bevis om detta dokument. Använd en PDF-läsare som t ex Adobe Reader som kan visa dolda bilagor för att se bilagorna. Observera att om dokumentet skrivs ut kan inte integriteten i papperskopian bevisas enligt nedan och att en vanlig papperutskrift saknar innehållet i de dolda bilagorna. Den digitala signaturen (elektroniska förseglingen) säkerställer att integriteten av detta dokument, inklusive de dolda bilagorna, kan bevisas matematiskt och oberoende av Scrive. För er bekvämlighet tillhandahåller Scrive även en tjänst för att kontrollera dokumentets integritet automatiskt på: <https://scrive.com/verify>

